



Impeller
 (3.1") 80 mm

Macerator Pump 01 Series

Features & Benefits

- Dual Blade and Housing
- Seamless Shell Design
- Thermally Protected Motor
- High Quality Efficient Motor
- Run Dry Capability

Typical Applications

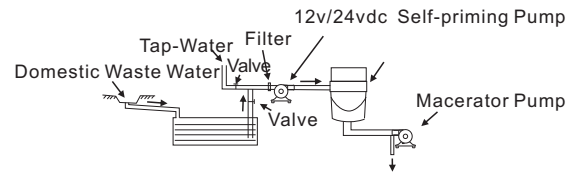
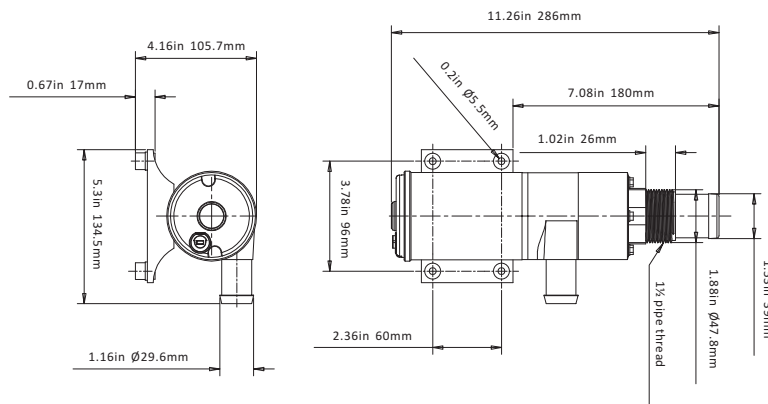
- RV & Campers
- Boats & Mobile Kitchenware
- Industrial
- Marine

PUMP

- Liquid Temperature**
140°F (60°C) Max.
- Priming Capabilities**
Not needed flooded suction
- Power**
12 amps max current draw
- Max Pressure**
Not needed
- Inlet/Outlet Ports**
Inlet: 1.5" (39 mm) Hose Barb
or thread fitting
Outlet: 1" Hose Barb
- Weight**
4.9 lbs (2.24 kg)

MOTOR

- Type**
High quality seamless design that is thermally protected
- Leads**
Wire leads
- Temperature Limits**
140°F (60°C) Max.
- Duty Cycle**
Intermittent
- Voltage**
12v/24v



Typical application

STANDARD PUMP CONFIGURATIONS

Model	GPM/LPM	Dimensions	Impeller	Ports	Lead	Molded	Voltage	Max Draw(A)
SFMP1-120-01	12/45.0	13.98"x5.24"x4.33" 355x133x110mm	Rubber & copper	1.5" Hose Barb 1" Hose Barb	Yes	N/A	12v	12.0
SFMP2-120-01	12/45.0	13.98"x5.24"x4.33" 355x133x110mm	Rubber & copper	1.5" Hose Barb 1" Hose Barb	Yes	N/A	24v	7.0