

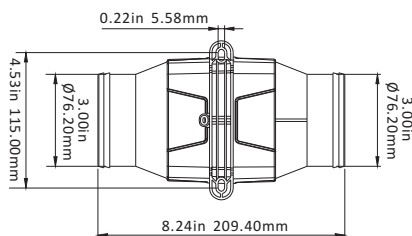
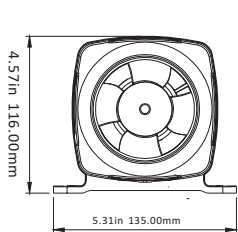
## In-Line Blowers

### Features & Benefits

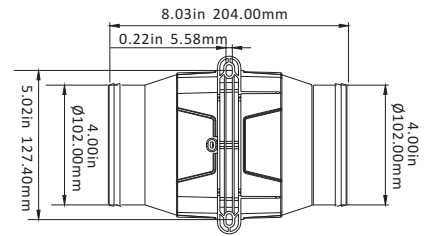
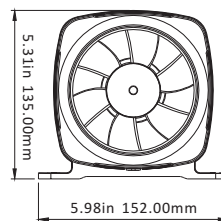
- Built-in mounting feet allow easy vertical or horizontal installation
- Very low current draw, high volume air flow, long life
- Four/Six-blade fan maximizes airflow and efficiency
- Sealed motor shaft for moisture protection
- Corrosion resistant ABS plastic housing

### Typical Applications

- Boats bilge ventilation
- Engine compartments
- Galleys and heads
- Race cars and helmet ventilation;
- Bus ventilation (engine and bathroom fumes)
- Tanning booths
- Prison van ventilation (cooling, air-freshening)
- Blow-up signs and mascots
- Building ventilation



130 CFM



270 CFM

### Technical Data

Model	Volts(V)	Air Flow (cfm/cmh)	Amp Draw(A)	Fuse (A)	Intake Pipe Dia(A)	Packing Size(mm)	N.W/G.W (kg)
SFIB1-130-01	12V	130/220	2.5A	5.0A	3"/76	215*137*120	0.45/0.60 kg
SFIB2-130-01	24V	130/220	1.3A	3.0A	3"/76	215*137*120	0.45/0.60 kg
SFIB1-270-02	12V	270/456	6.0A	10.0A	4"/102	207*154*114	0.70/0.90 kg
SFIB2-270-02	24V	270/456	3.0A	5.0A	4"/102	207*154*114	0.70/0.90 kg